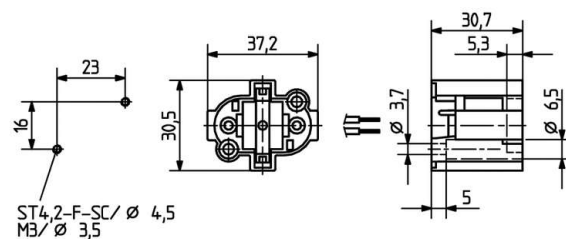
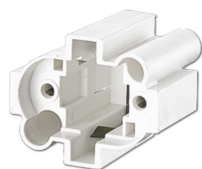


 Create pdf

## Lampholders for compact fluorescent lamps

26.719.4357

G23



colour	pkg.	wt.	part no.
white	250	13 g	26.719.4357.50





Wiring: rear entry wiring

For lamps TC-S

Screw fixing vertically

Housing: PBT

- Holes:  $\varnothing$  3.7 mm: for screws ISO 1207 - M3 or for self-tapping screws with locating groove ISO 1481-ST4,2- F/ ISO 4753 - SC

T 140				
		0.5 - 1.0 mm <sup>2</sup>	max. ø 1.8 mm	0.5 - 1.0 mm <sup>2</sup>

Document generated on: We, 8. February 2017 - 14:30